



### **Volunteering for Beta Theta Pi**

Volunteers of Beta Theta Pi are committed to supporting the worthy endeavors of chapter members by serving as role models and providing guidance aimed at increasing chapter success. All volunteers are dedicated to:

- Embracing the objects, mission and vision of Beta Theta Pi
- Providing growth opportunities for all members of the fraternity
- Supporting concepts of accountability and self-governance to ensure a safe and positive fraternal experience
- Empowering collegiate members and each other to reach their full potential as leaders who make decisions based upon the values and principles of Beta Theta Pi
- Teaching the applicability of collegiate fraternal management skills to post-graduate life
- Fostering open and honest relationships between undergraduate members, the host institution, alumni, parents, the General Fraternity and all other constituents

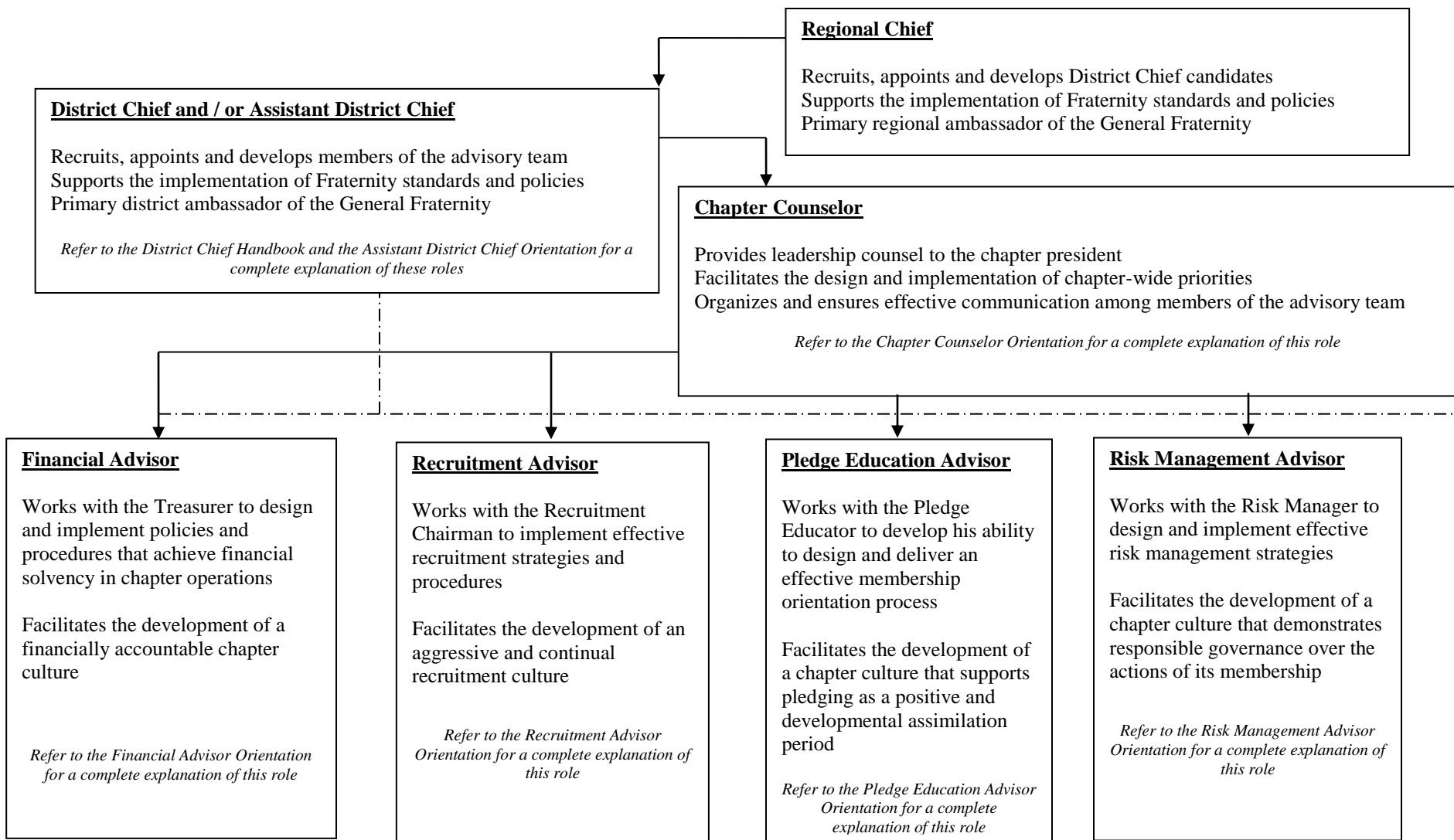
### **Support**

- Professional training programs
  - Opportunities are available both locally and regionally for training. In particular, the *Leadership Summit* (for district chiefs and assistant district chiefs) and the *Keystone Regional Leadership Conference* (for officers and advisors) are professional programs that deliver high quality training and direction.
  - Also, local retreat models are available and, in many cases, a professional facilitator can be found to conduct the retreat.
- Online resources and best practices
  - The Beta Theta Pi webpage has many resources particular to each volunteer role. To access the materials, go to <http://www.betathetapi.org/resources/volunteer-resources>
- Leadership Consultant
  - This traveling Beta Theta Pi professional staff person can offer coaching, assessment and training opportunities.
- Directors of Chapter Services and Director of Chapter Operations
  - These Beta Theta Pi professional staff members work with undergraduate members, volunteers, and the Leadership Consultants to organize volunteer recruitment, development, and training opportunities
- Host institution administrators
  - Many host institutions have resources available to volunteers at a local level.
- Peer volunteers and former volunteers
  - There is no better resource than a person that has experience. Beta Theta Pi will gladly connect anyone with other volunteers to learn best practices and recommendations.



**Volunteer Structure**

The flow chart below presents a visual outline of Beta Theta Pi’s volunteer structure. Each position is purposeful and essential to smooth operation. Healthy communication and relationships between all positions is necessary for a solid support structure. *Note: not all chapters use the same titles for officers and advisors*



*Note: The district chief is responsible for the appointment and development of all advisors. The chapter counselor is responsible for organizing and setting priorities for this group. It is difficult to separate these responsibilities completely, therefore the district chief and chapter counselor must work closely to create an engaged and skilled volunteer support structure.*